

510



AN INITIATIVE OF  
THE NETHERLANDS  
RED CROSS

## MISSION

Shape the future of humanitarian aid by converting data into understanding, and put it in the hands of humanitarian relief workers, decision makers and people affected, so that they can better prepare for and cope with disasters and crises.

510

Raymond Nijssen  
rnijsen@rodekruis.nl

OSGeo.nl / OpenStreetMap  
Nieuwjaarsborrel

14 januari 2018 – Hilversum



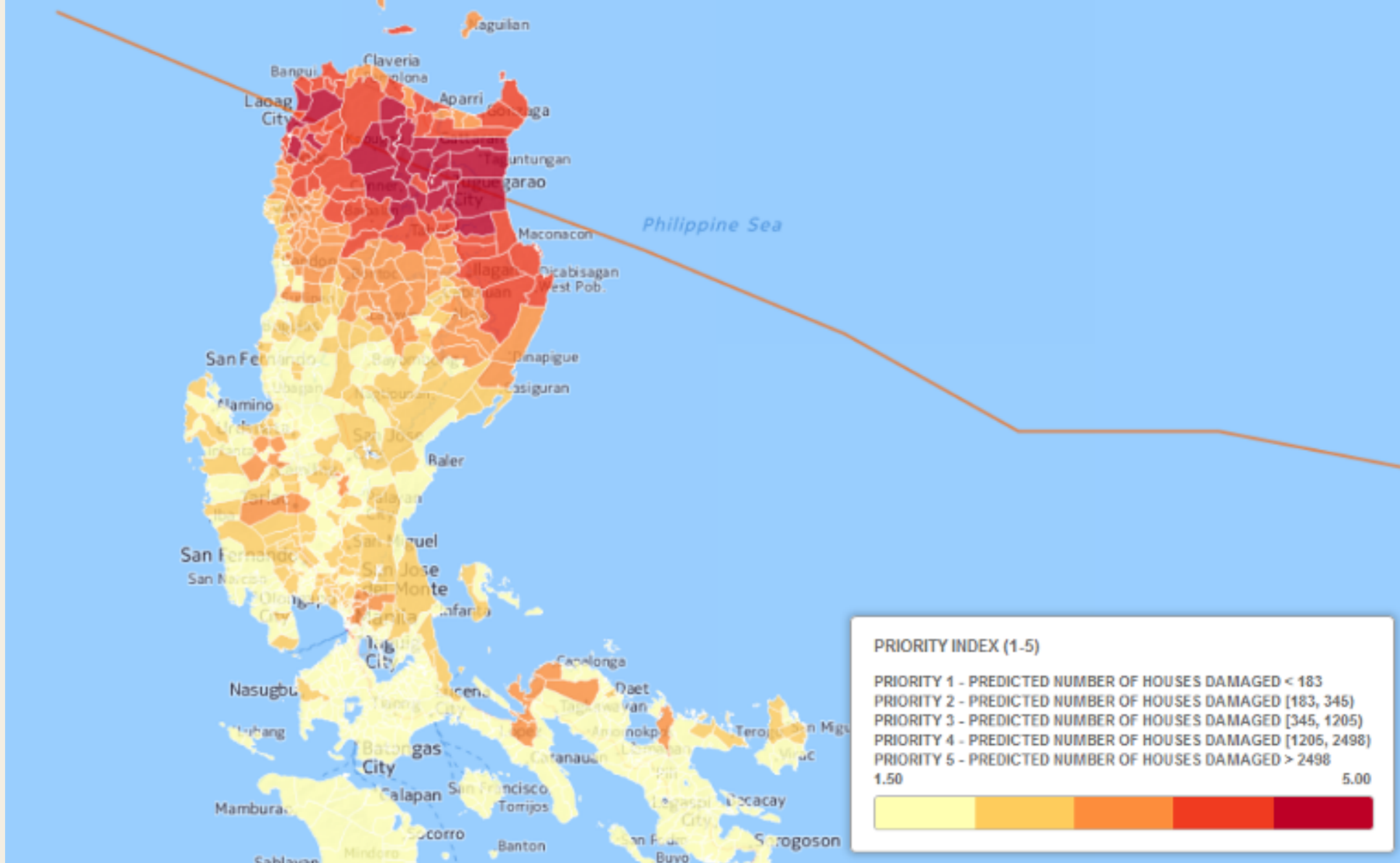
510 million square kilometers is the total surface of the earth

## MISSION

Shape the future of humanitarian aid by converting data into understanding, and put it in the hands of humanitarian relief workers, decision makers and people affected, so that they can better prepare for and cope with disasters and crises.

510

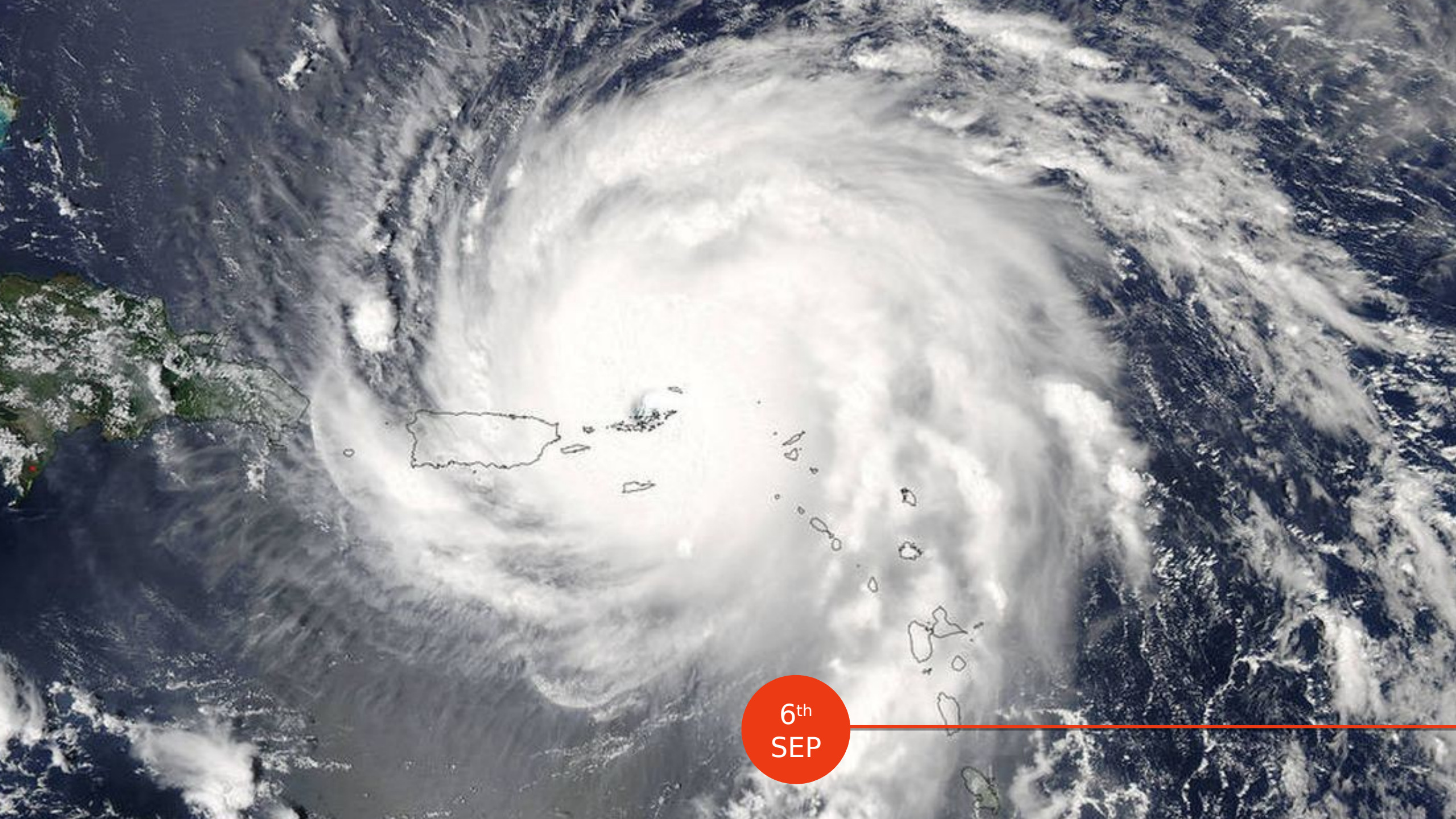
# Priority Index





**MISSING  
MAPS**





6<sup>th</sup>  
SEP

510

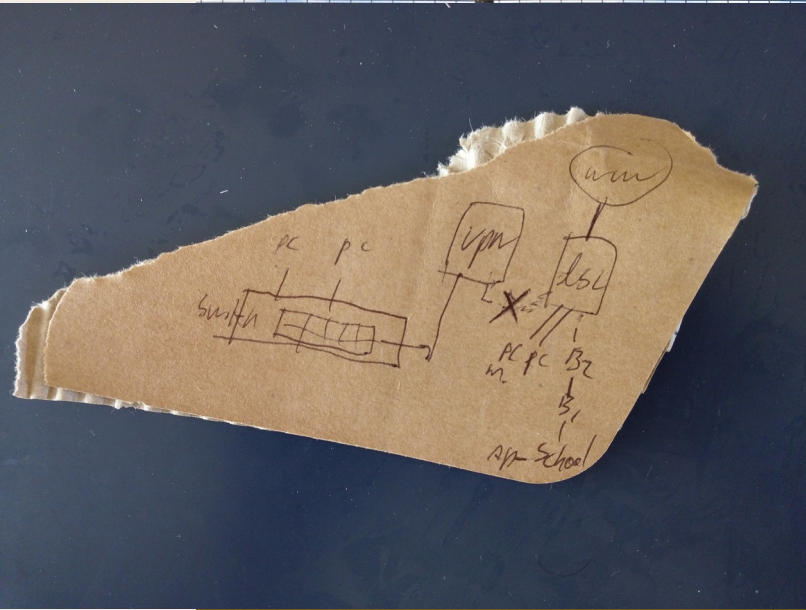
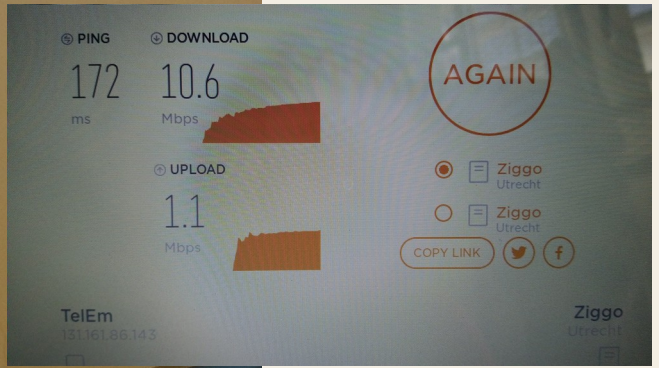


AN INITIATIVE OF  
THE NETHERLANDS  
RED CROSS

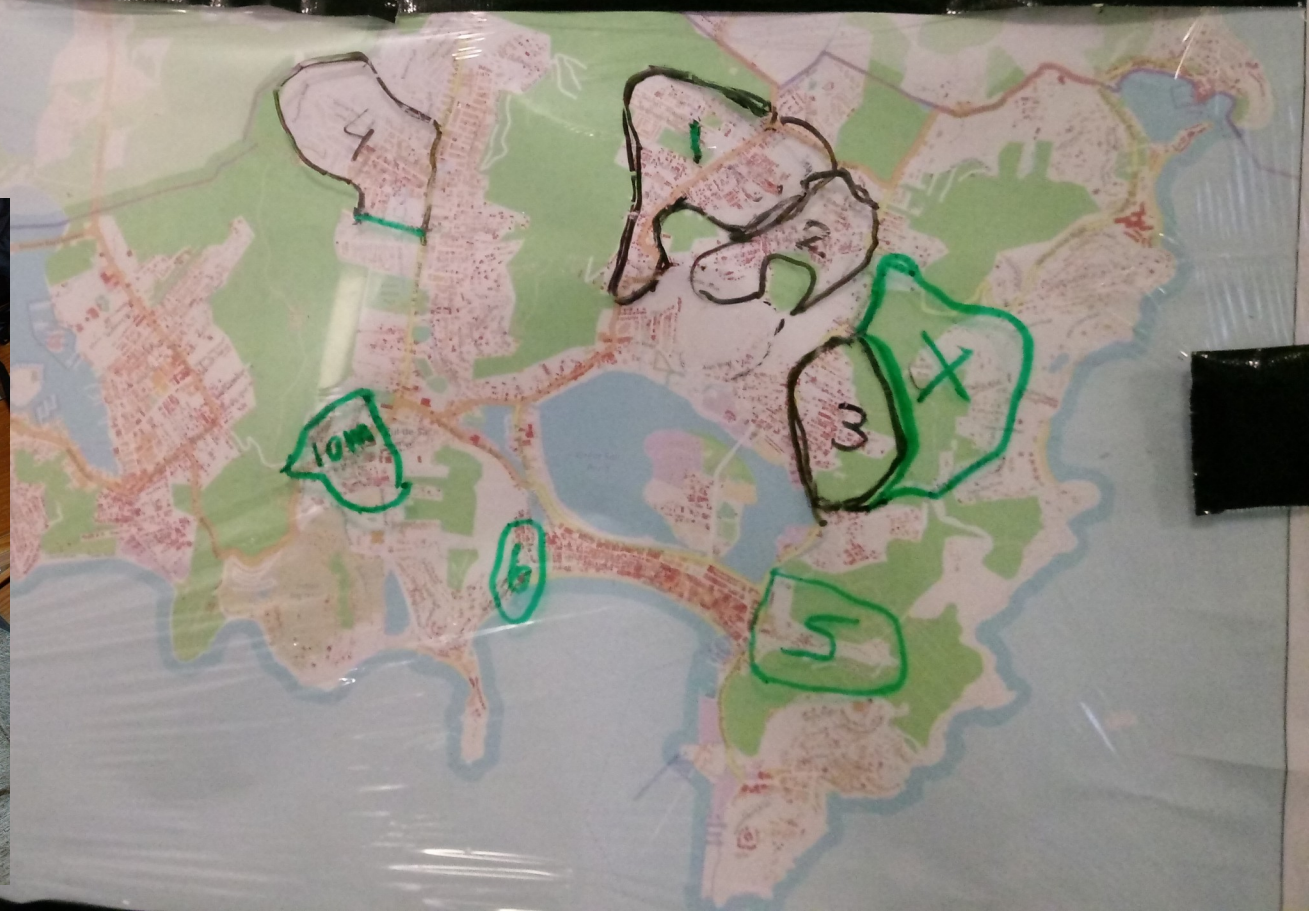


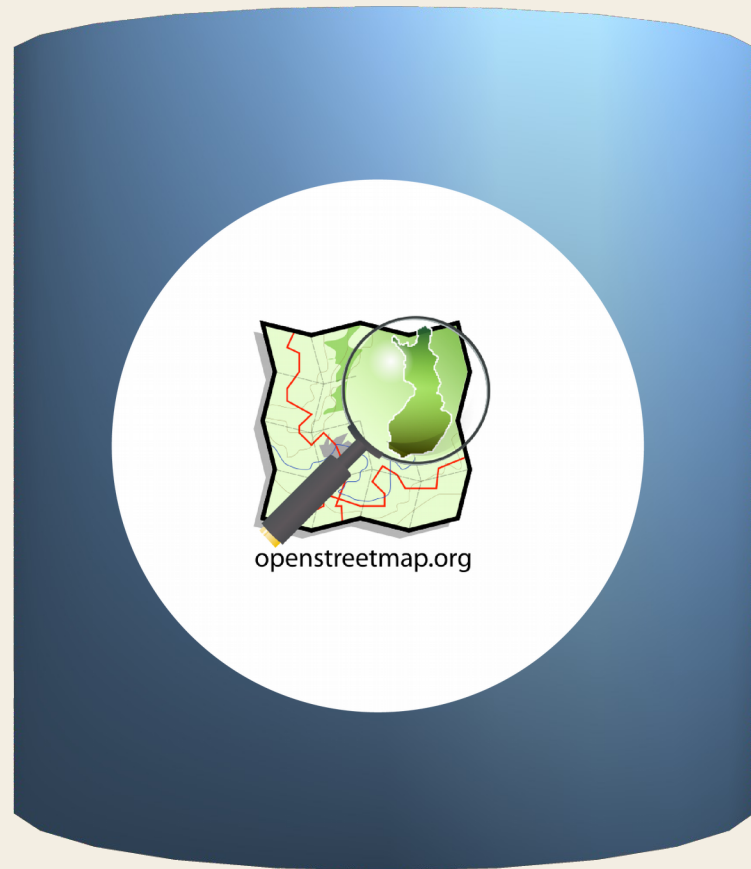


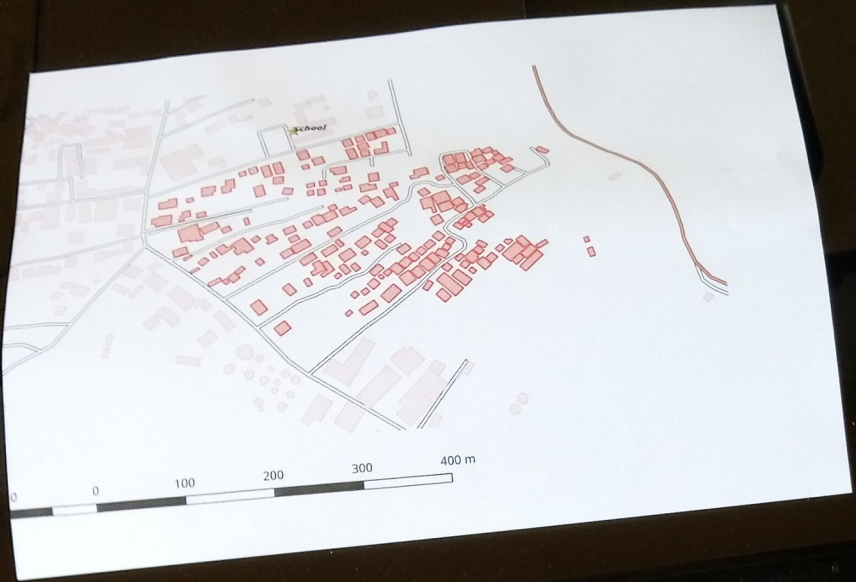
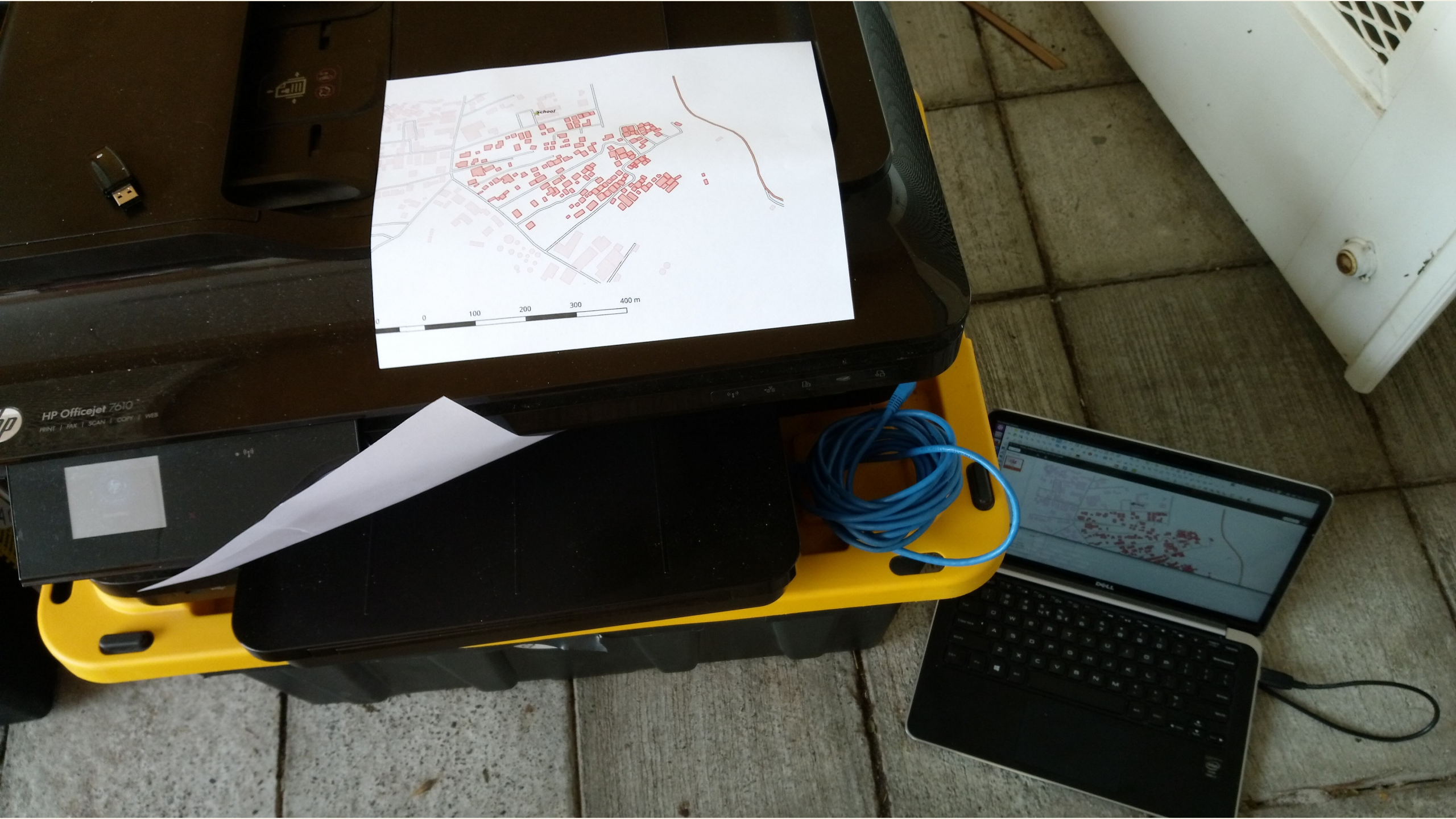




1	DUTCH QUARTER	645	1086	118
2	MIDDLE REGION	636		76
3	Sucker Garden	349		76
4	ST. PETERS	986	826	100
5	OVER THE BANK (?)	479	114	16
6	FORT WILLEM	3095	3047	+
				386

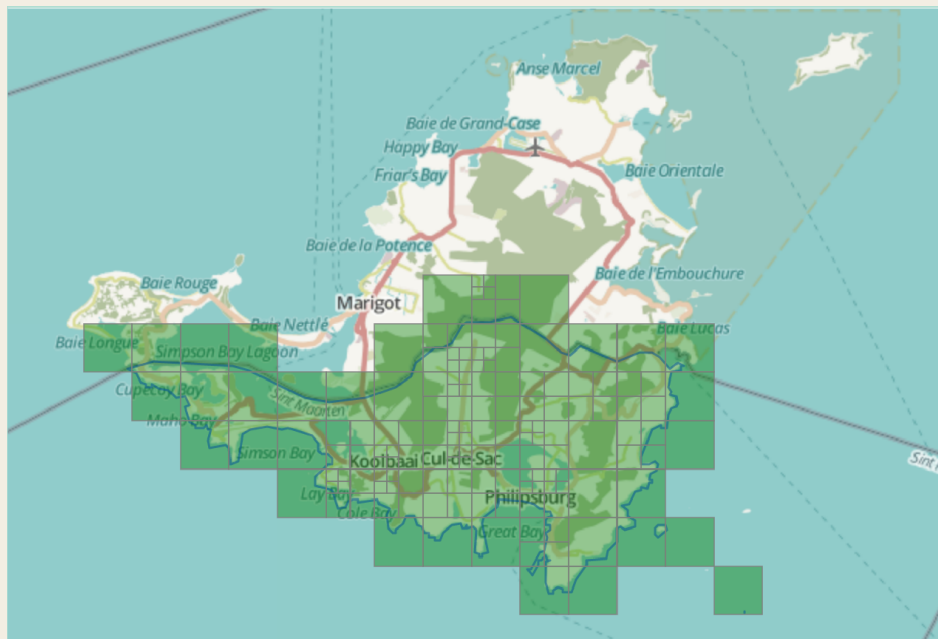








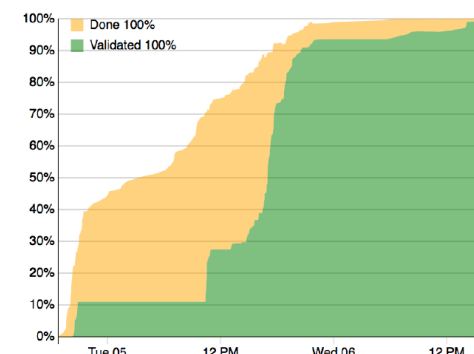




510



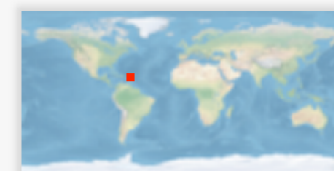
AN INITIATIVE OF  
THE NETHERLANDS  
RED CROSS



## #3486 Mapping communities of Sint Maarten in preparation of the upcoming hurricane IRMA

15 95%

- Requesting organization: **Netherlands Red Cross**
- Priority: **High**



In preparation of the upcoming hurricane IRMA, we kindly request mapping support for predisaster situation on St. Maarten. This will help the Red Cross and local responders to better respond. Also, this information will be used to analyze potential damage later.

Created by [Niel de Jong](#) - Updated 3 minutes ago - Priority: high

5<sup>th</sup>  
SEP

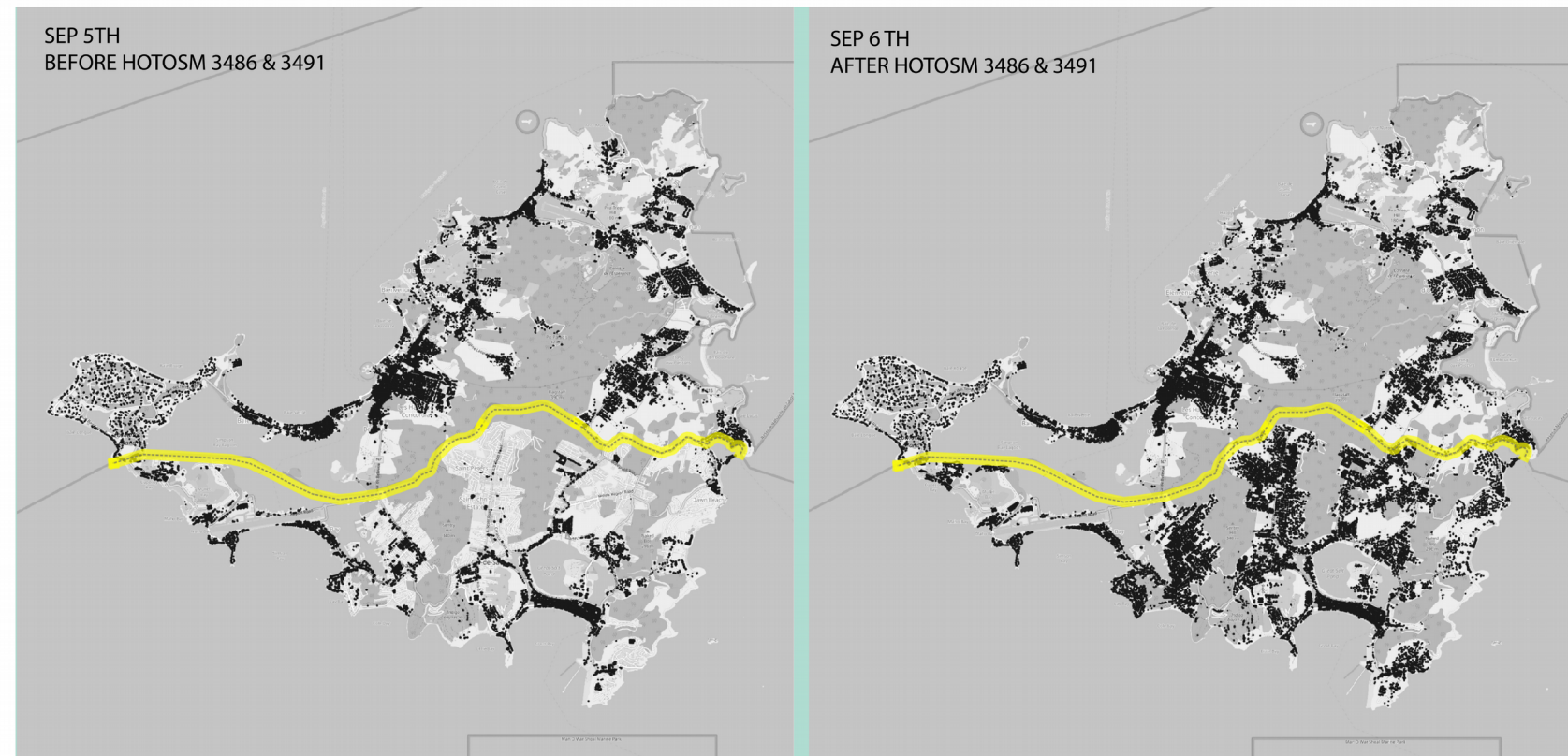


## SINT MAARTEN & SAINT MARTIN MAPPED

6 SEP 2017

510 Global sets HOTOSM tasks  
#3486 for south (Dutch) side of island  
#3491 for north (French) side of island  
Collectively adding 5683 new buildings.

Sources: 510GLOBAL, Hotosm tasks



510  AN INITIATIVE OF  
THE NETHERLANDS  
RED CROSS

**Red Cross**  St. Maarten

   
croix-rouge française

The maps used do not imply the expression of any opinion on the part of the International Federation of Red Cross and Red Crescent Societies or National Societies concerning the legal Status of a territory or of its Authorities. Produced by 510 An initiative from the Netherlands Red Cross. Base map: OpenStreetMap  
CONTACT: support@510.global

6<sup>th</sup>  
SEP



Sources: 510 GLOBAL





BEFORE IRMA:  
AERIAL IMAGERY  
SOURCE IGN  
Institut géographique national

510  AN INITIATIVE OF THE NETHERLANDS Red Cross  St. Maarten


FEB  
201  
7



AFTER IRMA:  
DRONE IMAGERY  
SOURCE: 510  
BLUE AREAS TARPULINE

510  AN INITIATIVE OF THE NETHERLANDS Red Cross  St. Maarten

SEP  
201  
7

 JuxtaposeJS

5<sup>th</sup>  
OCT

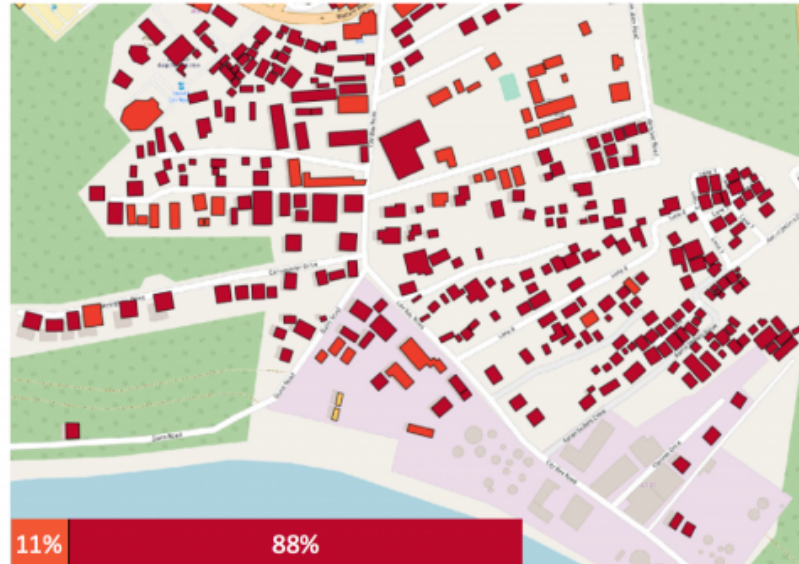
## SINT MAARTEN COMPARISON SATELITE V DRONE DAMAGE ASSESMENT HURRICANE IRMA

13 SEP 2017

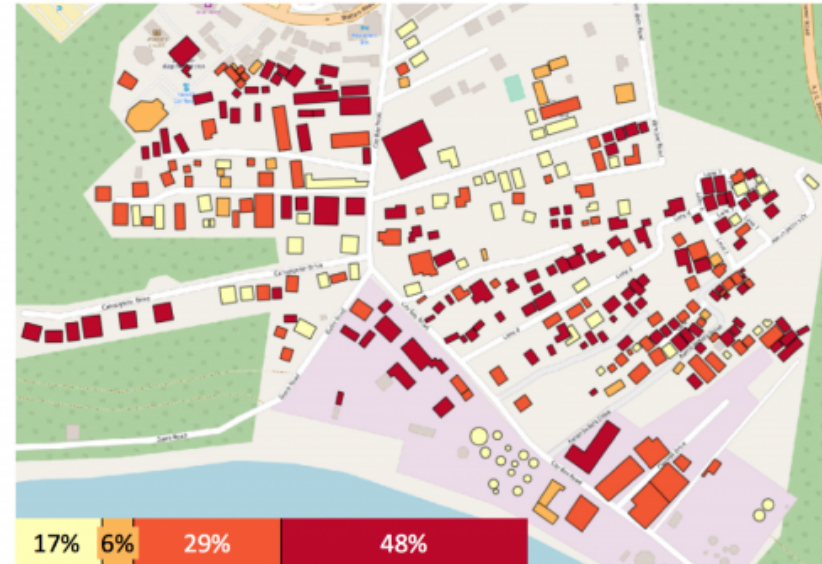
For Cay Bay area, a total of 288 buildings have been used in two different assessments.  
First assessment was by using initial satellite imagery by Copernicus.  
Second assessment was by using Drone imagery with OMK.

Sources: 510GLOBAL Drone/OMK Imagery assesment, Copernicus Satellite Imagery assesment, OpenStreetMap.

**COPERNICUS - DAMAGE ASSESSMENT CAY BAY**



**510 (OMK + DRONE) - DAMAGE ASSESSMENT CAY BAY**



1:ROOF  
DAMAGE  
DATA SET

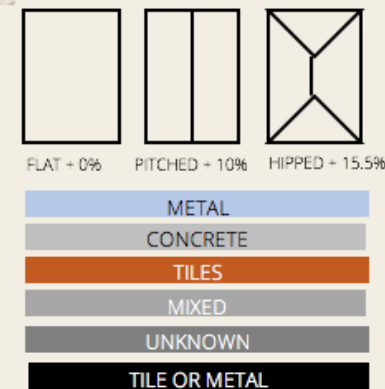
- Building Damage
- ☐ none
  - ☐ partial
  - ☐ significant
  - ☐ destroyed
  - ☐ unknown

2:ROOF  
SURFACE  
AREA  
DATA SET

- roof
- ☐ hipped
  - ☒ pitch
  - ☐ flat
  - ☐ unknown

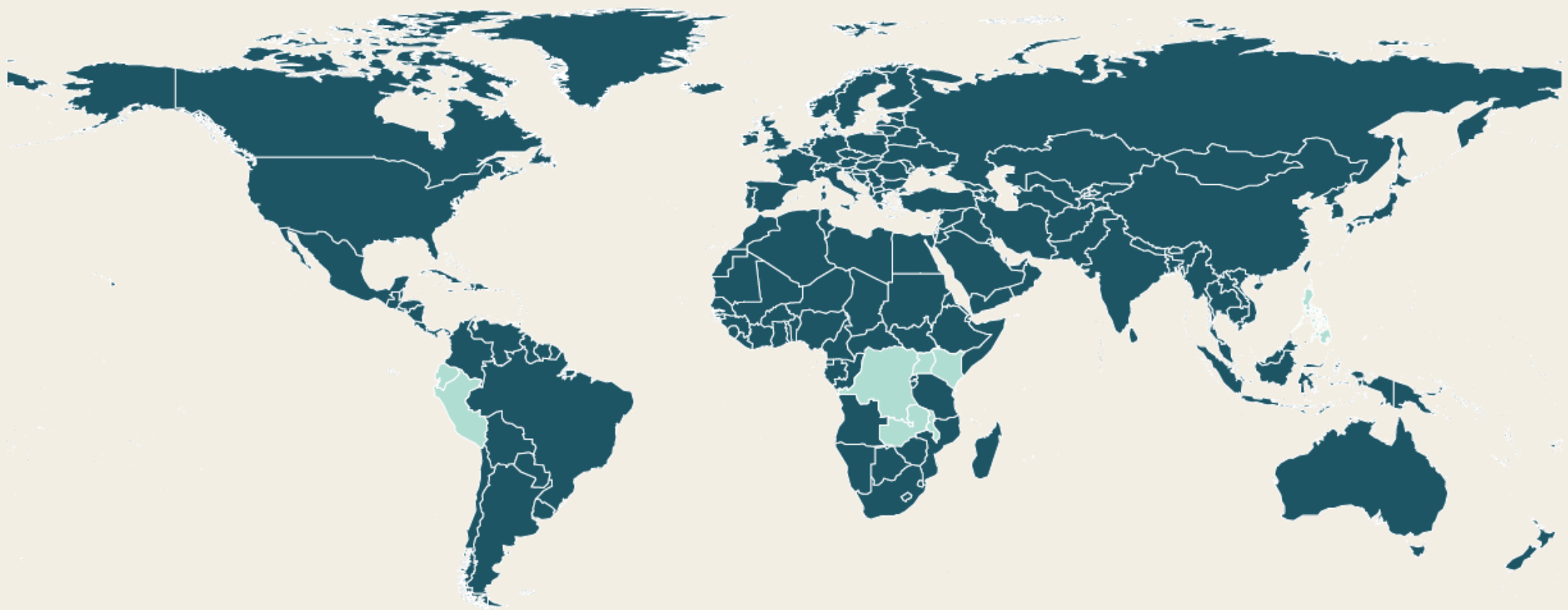
3:ROOF  
MATERIAL  
DATA SET

- material
- ☐ roof\_concrete
  - ☐ roof\_metal
  - ☐ roof\_tiles
  - ☐ roof\_mixed



5<sup>th</sup>  
OCT







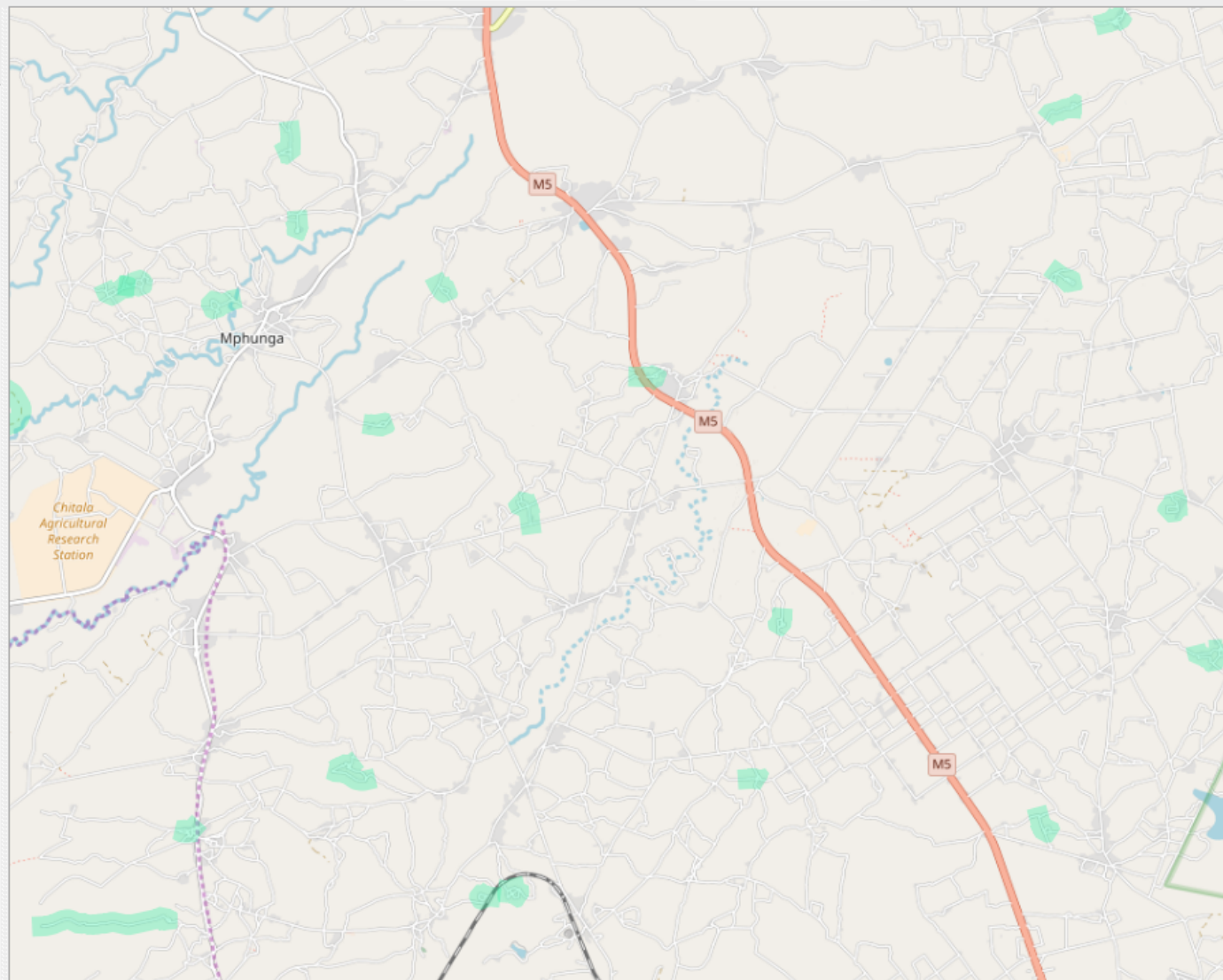
[openstreetmap.org](https://openstreetmap.org)





## Layers Panel

- ☐ different\_type\_roads
- ☐ roads\_validation\_real\_orphans
- ☐ roads\_validation\_orphans
- ☒ errors\_self\_intersecting\_roads
- ☐ roads\_test
- ☒ osm\_new\_roads [212560]
  - ☒ mainroads [3044]
  - ☒ minorroads [208592]
  - ☒ motorways [585]
  - ☒ railways [339]
  - ☒ [0]
- ☐ roads
  - ☒ primary
  - ☒ primary\_link
  - ☒ secondary
  - ☒ secondary\_link
  - ☒ tertiary
  - ☒
- ☐ osm\_new\_mainroads
  - ☒ primary
  - ☒ primary\_link
  - ☒ secondary
  - ☒ secondary\_link
  - ☒ tertiary
  - ☒
- ☐ osm\_new\_mainroads
- ☐ osm\_new\_amenities
- ☒ OSM Standard
- ☐ Bing Map
- ☐ Bing Satellite



THANK YOU  
BEDANKT

---